

Guideline for authors

General information.....	3
Aims&scope	3
Aims.....	3
Scope.....	3
Types of papers	3
Manuscript submission and requirements	4
Manuscript submission	4
Submission requirements	4
a. Cover letter.....	4
b. Manuscript for research full papers	4
c. Manuscript for review papers	4
Peer review	5
Permissions	6
Ethics in publishing (Duties of authors)	6
a. Reporting standards	6
b. Data access and retention.....	6
c. Originality and plagiarism.....	6
d. Concurrent publication	6
e. Acknowledgement of sources	7
f. Authorship of the paper	7
g. Hazards and human or animal subjects	7
h. Fundamental errors in published works	7
Conflicts of interest.....	7
Copyright transfer	8
Manuscript preparation	8
a. Title.....	8
b. Running title.....	8
c. Author names and affiliations	8
d. Highlights	8
e. Graphical abstract	9
f. Abstract	10
g. Keywords and speciality	10
h. Introduction	10
i. Materials and methods	10
j. Results	11
k. Discussion.....	11
l. Conclusions	11
m. Abbreviations	11
n. Acknowledgements.....	11
o. Appendixes (if needed)	11

p. Tables	11
q. Figures.....	12
r. Formulae and equations	13
s. Footnotes.....	13
t. Units of measurement	13
u. Citations and references	14
v. Supplemental material	14
w. Materials from third parties	15
x. Notification.....	15
Post acceptance	15
Proofing.....	15
Author enquiries	15
Open choice	15
a. Subscription.....	16
b. Open access	16
Research data policy	16

General information

Soil Ecology Letters (SEL) is an authoritative source of information for professionals in the broad field of soil ecology, supervised by the Ministry of Education of China, administered by Higher Education Press of China, and Institute of Urban Environment, Chinese Academy of Sciences (CAS), and jointly published by Higher Education Press of China and Springer on a quarterly basis in English. The journal is published both in print and online. Online versions are available both at <http://www.springer.com/journal/42832> and <http://journal.hep.com.cn/sel>.

Aims&scope

Aims

Soil Ecology Letters provides rapid publication of original research articles of scientific significance that depict and explain ecological processes occurring in soil. Manuscripts concerning the ecology of all taxa, in any biome in the soil will be considered, and preferred selection will be made in terms of originality, common interest and contribution to the development of soil ecology. We focus on the ecology and biogeochemical processes of soil organisms, their interactions with plants and their influences on soil functions, ecosystem services and environmental sustainability, as well as the applications or development of new technologies, theories and modeling of soil ecological processes. In addition to full-length research articles, the journal also publishes perspectives to present novel essays for a wide audience, mini-reviews of contemporary studies that show significant and novel hypotheses, rapid reports meriting urgent coverage, as well as letters to the editor and commentaries about specific and controversial issues of soil ecology.

Scope

The scope of *Soil Ecology Letters* is extensive and includes all aspects of recent research in soil ecology. Some of the subjects that are attracting growing attention are soil biodiversity, soil microbial interactions and food web, soil microbiome, soil-plant interactions, soil biogeochemical cycling, soil bioremediation and restoration, soil multifunctionality, response and adaptation of soil biota to environmental changes, and breakthrough technologies, novel theories and modeling of soil ecological processes.

Types of papers

The following types of papers can be submitted to the journal:

LETTER TO EDITOR Letters are accepted from time to time on content previously published in *Soil Ecology Letters* or on other topics of interest to our readers. In this section, the journal rarely publishes original research. Letters are not usually peer-reviewed, but the journal might invite replies from the authors of the original publication, or pass on letters to these authors.

PERSPECTIVE Perspectives provide a comprehensive view of a topic or offer a new viewpoint on an issue. They may be somewhat more opinionated than Reviews, and may take a narrower field of view. Perspectives are always peer-reviewed, and are edited by the journal editors in consultation with the authors.

REVIEW Review papers are encouraged for giving an in-depth overview of certain topic or a review of one's own work or one laboratory or a group of researchers. The format and length of review papers are flexible. Review papers are peer reviewed.

RAPID REPORT Rapid Reports focus on the speedy dissemination of highly original and novel work. They are usually a concise, but independent report representing a significant contribution to soil ecology, not intended to publish preliminary results, only if these results are of exceptional interest and are particularly topical and relevant. Rapid Reports are also peer reviewed.

RESEARCH ARTICLE Research Articles are contributions describing original research, including theoretical exposition, extensive data and in-depth critical evaluation, and are peer reviewed.

COMMENTARY Commentary articles are opinionated pieces that focus on a specific and controversial issue of soil ecology. Commentaries may be peer-reviewed at the editors' discretion, and are edited by the journal editors in consultation with the authors.

Manuscript submission and requirements

Manuscript submission

Submission to this journal proceeds totally online (<https://mc.manuscriptcentral.com/selett>). The website guides authors stepwise through the creation and uploading of the various files. Note that original source files, not PDF files, are required. Once the submission files are uploaded, the system automatically generates an electronic (PDF) proof, which is then used for reviewing. All correspondence, including the editor's decision and request for revisions, will be sent by e-mail.

The manuscript should be typed, double-spaced, in 12-point Times New Roman font, with default margins on all sides. To assist reviewers, please add line numbering to your manuscript. Include page numbers on the document, beginning with the title page as number 1.

Submission requirements

a. Cover letter

A covering letter must accompany each submission indicating the name, address, and telephone number of the author to whom all correspondence is to be addressed. An affiliation must be supplied for each author. Authors are also asked to provide the names and contact information for four potential reviewers (at least two overseas reviewers should be recommended for contributors from China) in their cover letter. However, the journal is not obliged to use the suggested reviewers. Final selection of reviewers will be determined by the editors.

b. Manuscript for research full papers

Manuscripts should be in a Word. The following components are required for a complete manuscript: Title, Running title, Author name(s) and Affiliation(s), Abstract, Keywords, Nomenclature (when needed), Main text (Introduction, Materials and Methods, Results, Discussion, Conclusions), References, Acknowledgements, Appendices, Figures, Tables.

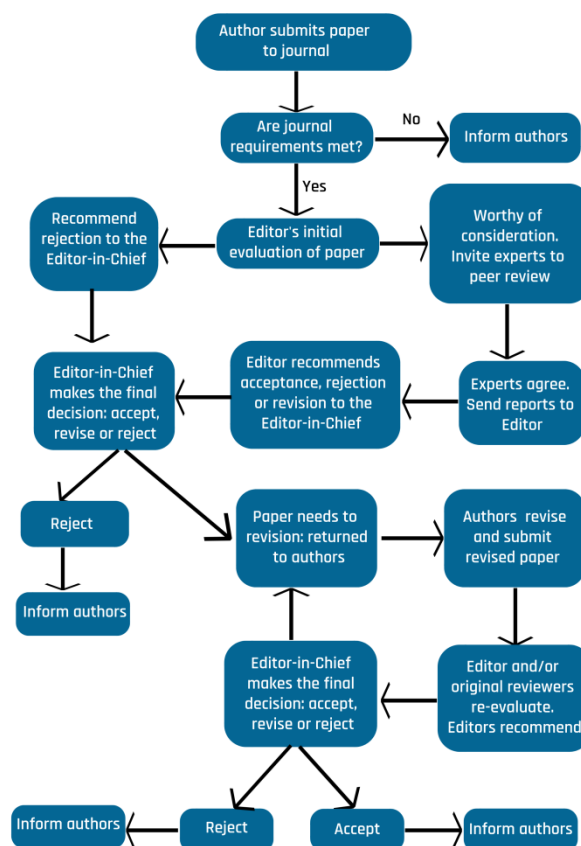
c. Manuscript for review papers

Reviews give a general overview of a particular field, providing the reader with an appreciation of

the importance of the work, historical context, a summary of recent developments, and a starting point in the specialist literature. Manuscripts should be divided into appropriate sections, with an extensive list of references. In addition to undergoing the same rigorous level of technical peer-review as Research papers, Review papers will be critiqued based on the general impact of the field being reviewed, the relevance of the field to experimental mechanics, preexisting reviews of the field, and acknowledgement of the contributing author as a dominant figure in the field. Therefore, it is strongly recommended that authors interested in submitting a Review article correspond with the Editor prior to submission. General formatting text, illustrations, and references are the same as outlined for research papers.

Peer review

This journal operates a single anonymized review process. All contributions will be initially assessed by the editor for suitability for the journal. Papers deemed suitable are then typically sent to a minimum of two independent expert reviewers to assess the scientific quality of the paper. The Editor will then make recommendations for acceptance, rejection or revision to the Editor-in-Chief based on the external review comments. The Editor-in-Chief's decision is final. The Editor-in-Chief and Editors are not involved in decisions about papers which they have written themselves or have been written by family members or colleagues or which relate to products or services in which the editor has an interest. Any such submission is subject to all of the journal's usual procedures, with peer review handled independently of the relevant editor and their research groups.



Permissions

Authors reusing any figures, tables, or text passages that are not original (including that published in the authors' own previous papers) are required to OBTAIN PERMISSION from the copyright owner(s) [in general, the publisher(s) of the journal, not the authors of the paper] and to state clearly in the figure/table caption or other appropriate locations in the manuscript that such permission has been obtained. For example: Adapted with permission from (Zhang et al., 2018). Any content received without such evidence will be assumed to originate from the author(s). It is the authors' responsibility to retain an electronic or hardcopy of the permission.

Ethics in publishing (Duties of authors)

a. Reporting standards

Authors of reports of original research should present an accurate account of the work performed as well as an objective discussion of its significance. Underlying data should be represented accurately in the paper. A paper should contain sufficient detail and references to permit others to replicate the work. Fraudulent or knowingly inaccurate statements constitute unethical behavior and are unacceptable.

b. Data access and retention

Authors may be asked to provide the raw data in connection with a paper for editorial review, and should be prepared to provide public access to such data, if practicable, and should in any event be prepared to retain such data for a reasonable time after publication.

c. Originality and plagiarism

The authors should ensure that they have written about entirely original work, and if the authors have used the work and/or words of others, these work/words have been appropriately cited or quoted.

Plagiarism takes many forms, from 'passing off' another's paper as the author's own paper, to copying or paraphrasing substantial parts of another's paper (without attribution), to claiming results from research conducted by others. Plagiarism in all its forms constitutes unethical publishing behavior and is unacceptable.

d. Concurrent publication

An author should not in general publish manuscripts describing essentially the same research in more than one journal or primary publication. Submitting the same manuscript to more than one journal concurrently constitutes unethical publishing behavior and is unacceptable.

In general, an author should not submit for consideration in another journal a previously published paper. Publication of some kinds of papers (e.g., clinical guidelines, translations) in more than one journal is sometimes justifiable, provided certain conditions are met. The authors and editors of the journals concerned must agree to the secondary publication, which must reflect the same data and interpretation of the primary document. The primary reference must be cited in the secondary publication.

Manuscripts submitted to this journal must not be under simultaneous consideration by any other publisher and should not have been published elsewhere in substantially similar form. No part of a paper which has been published by *Soil Ecology Letters* may be reproduced or published elsewhere without the written permission of the publisher.

e. Acknowledgement of sources

Proper acknowledgement of the work of others must always be given. Authors should cite publications that have been influential deeply in the reported works. Information obtained privately, as in conversation, correspondence, or discussion with third parties, must not be used or reported without explicit, written permission from the source. Information obtained in the course of confidential services, such as refereeing manuscripts or grant applications, must not be used without the explicit written permission of the author of the work involved in these services.

f. Authorship of the paper

Authorship should be limited to those who have made a significant contribution to the conception, design, execution, or interpretation of the reported study. All those who have made significant contributions should be listed as co-authors. Where there are others who have participated in certain substantive aspects of the research project, they should be acknowledged or listed as contributors.

The corresponding author should ensure that all appropriate co-authors and no inappropriate co-authors are included on the paper, and that all co-authors have seen and approved the final version of the paper and have agreed to its submission for publication.

g. Hazards and human or animal subjects

The authors must clearly identify them in the manuscript, if their work involves chemicals, procedures or equipment that have any unusual hazards inherent in their use, or involves the use of animal or human subjects. The manuscripts must contain a statement that all procedures were performed in compliance with relevant laws and institutional guidelines and that the appropriate institutional committee(s) has approved them.

h. Fundamental errors in published works

When an author finds out a significant error or inaccuracy in his/her own published work, it is the author's obligation to promptly notify the journal editor or publisher and cooperate with the editor to retract or correct the paper. If the editor or the publisher gets notice from a third party that a published work contains a significant error, it is the obligation of the author to promptly retract or correct the paper or provide evidence to the editor of the correctness of the original paper.

Conflicts of interest

A conflict of interest may exist when an author or the author's institution has a financial or other relationship with other people or organizations that may inappropriately influence the author's work. A conflict can be actual or potential and full disclosure to the Journal is the safest course. All submissions to the Journal must include disclosure of all relationships that could be viewed as

presenting a potential conflict of interest. The Journal may use such information as a basis for editorial decisions and may publish such disclosures if they are believed to be important to readers in judging the manuscript. A decision may be made by the Journal not to publish on the basis of the declared conflict.

Copyright transfer

Copyright of papers published in *Soil Ecology Letters* is transferred to the Higher Education Press by the author(s). The copyright transfer form must be submitted when the manuscript is accepted. Authors are encouraged to submit the copyright together with submitting the manuscript.

Authors are asked to return by email or fax the signed statement of copyright transfer to the Editorial Office of *Soil Ecology Letters*.

Manuscript preparation

Headings and subheadings should be used throughout the text to divide the subject matter into its important, logical parts. Typical headings include: Introduction, Materials and methods, Results, Discussion, Conclusions, Acknowledgments, Appendixes and References. Subheadings should be numbered 1.1 (then 1.1.1, 1.1.2, ...), 1.2, etc. (the abstract is not included in heading numbering).

a. Title

The title of the paper should be explicit, descriptive and as brief as possible – no more than 20 words in length. Avoid abbreviations and formulae where possible.

b. Running title

A short version of the paper title (up to 80 characters).

c. Author names and affiliations

Please clearly indicate the given name(s) and family name(s) of each author and check that all names are accurately spelled. Present the authors' affiliation addresses (where the actual work was done) below the names. Indicate all affiliations with a lower-case superscript letter immediately after the author's name and in front of the appropriate address. Provide the full postal address of each affiliation, including the country name, and, if available, the e-mail address of each author.

Clearly indicate who will handle correspondence at all stages of refereeing and publication, also post-publication. The telephone and fax numbers (with country and area code) in addition to the e-mail address and the complete postal address of the corresponding author should be given.

d. Highlights

Highlights are mandatory for this journal. They consist of a short collection of bullet points that convey the core findings of the article and should be submitted in a separate editable file in the

online submission system. Please use 'Highlights' in the file name and include 3 to 5 bullet points (maximum 85 characters, including spaces, per bullet point). Highlights will be displayed in online search result lists and appear in the article PDF file or print.

e. Graphical abstract

Graphical Abstract is mandatory for this journal. A Graphical Abstract is a single, concise, pictorial and visual summary of the main findings of the article. This could either be the concluding figure from the article or a figure that is specially designed for the purpose, which captures the content of the article for readers at a single glance. Please see example below.

Author instructions

A Graphical Abstract should allow readers to quickly gain an understanding of the main take-home message of the paper and is intended to encourage browsing, promote interdisciplinary scholarship, and help readers identify more quickly which papers are most relevant to their research interests.

Authors must provide an image that clearly represents the work described in the paper. A key figure from the original paper, summarising the content can also be submitted as a graphical abstract.

Graphical Abstracts should be submitted as a separate file in the online submission system by selecting "Graphical Abstracts" from the drop-down list when uploading files.

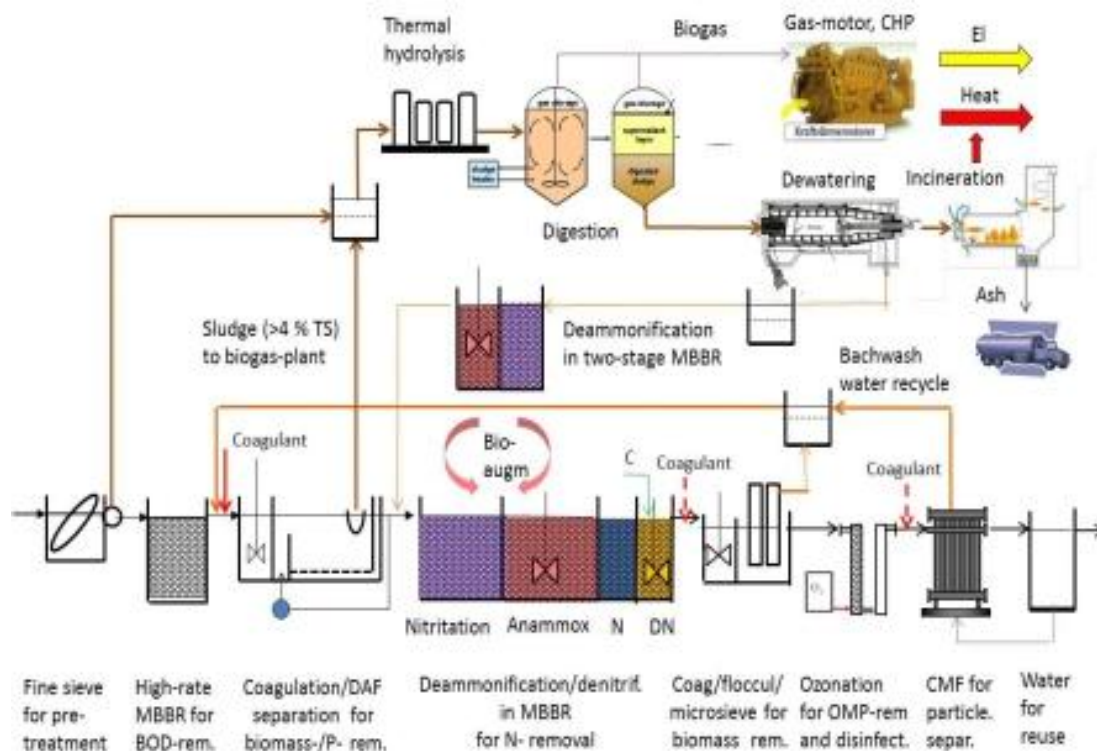
Specifications

A Graphical Abstract should be a one-image file and should visualize one process or make one point clear. For ease of browsing, the Graphical Abstract should have a clear start and end, preferably "reading" from top to bottom or left to right. Try to reduce distracting and cluttering elements as much as possible.

- Image size: Please provide an image with a minimum of 6cm × 11cm (h × w) using a minimum resolution of 300 dpi. If you are submitting a larger image then please use the same ratio.
- File type: preferred file types are TIFF, EPS, PDF or MS Office files.
- No additional text, outline or synopsis should be included. Any text or label must be part of the image file. Please do not use unnecessary white space or a heading "Graphical Abstract" within the image file.

Example of graphical abstracts in published article

A road-map for energy-neutral wastewater treatment plants of the future based on compact technologies (including MBBR)



f. Abstract

A concise and factual abstract in a range of 150-250 words is required. The abstract should state briefly the purpose of the research, the principal results and major message. An abstract is often presented separately from the article, so it must be able to stand alone. For this reason, References should be avoided, but if essential, they must be cited in full, without reference to the reference list. Also, abbreviations should be avoided, but if essential they must be defined at their first mention in the abstract itself.

g. Keywords and speciality

Immediately after the abstract, provide a maximum of 6 keywords separated by commas, avoid general and plural terms and multiple concepts (avoid, for example, "and", "of"). Be sparing with abbreviations: only abbreviations firmly established in the field may be eligible. These keywords will be used for indexing purposes. Use keywords that make your paper easy detectable for interested readers in literature databases. Repeating terms in the title is usually not needed. Please also select one speciality during the online submission.

h. Introduction

State the objectives of the work and provide an adequate background, avoiding a detailed literature survey or a summary of the results.

i. Materials and methods

Provide sufficient detail to allow the work to be reproduced. Methods already published should be indicated by a reference: only relevant modifications should be described.

j. Results

Results should be clear and concise. Show only those experimental results that are relevant to your objectives and conclusions and which you want to discuss.

k. Discussion

This should explore the significance of the results of the work, not repeat them. It should integrate your findings in a comprehensive picture and place them in the context of the existing literature. A combined Results and Discussion section can be appropriate. Avoid extensive citations and discussion of published literature.

l. Conclusions

Summarize the results in words rather than numbers and elaborate on the extent to which the objectives of the study were met. Do not include information from a literature search. Instead, focus on the primary conclusions of the study.

m. Abbreviations

Do not use abbreviations in the title or abstract and limit their use in the text. Expand all abbreviations at first mention in the text.

n. Acknowledgements

The "Acknowledgement section" is the general term for the list of contributions, credits, and other information included at the end of the text of a manuscript but before the references. Conflicts of interest and financial disclosures must be listed in this section. Authors should obtain written permission to include the names of individuals in the Acknowledgement section.

o. Appendixes (if needed)

Appendix A

A1, A2, A3...

Appendix B

Appendix C...

p. Tables

Large tables should be avoided. Reversing columns and rows will often reduce the dimensions of a table. If many data are to be presented, an attempt should be made to divide them over two or more tables.

- Supply units of measure at the heads of the columns. Abbreviations that are used only in a table should be defined in the footnotes to that table.
- Should always use rows and columns to correlate two variables. Submitted single-spaced and in the word processing software used. Do not embed tables as graphic files, document objects, or pictures.
- Submitted as three-line tables, that is, there are three horizontal lines: one under the legend, one under the column heads, and one below the body. Vertical lines are generally not used.
- Label each table at the top with a number followed by the table title. Insert explanatory material and footnotes below the table. Designate footnotes using lowercase superscript letters

(a, b, c) reading horizontally across the table.

- Unless needed, all the words within the tables should start with an uppercase character.
- Must be sequentially numbered and cited in the text as, e.g. Table 1.
- Place tables either next to the relevant text in the article, or on separate page(s) at the end.

Please see the example below.

Table 2 The biomass of ryegrass and rice, and the concentration of BDE-209 in shoots and roots of ryegrass and rice grown in the contaminated soils.

Treatments ^a		Root		Shoot	
		Biomass (g)	BDE-209 ($\mu\text{g kg}^{-1}$)	Biomass (g)	BDE-209 ($\mu\text{g kg}^{-1}$)
Aged-contaminated	Ry	1.94 \pm 0.18	nd ^b	7.65 \pm 0.58	nd
	RyG	2.27 \pm 1.03	154.6 \pm 12.6	7.51 \pm 1.67	nd
	RyC	1.79 \pm 0.42	96.2 \pm 8.5	8.56 \pm 1.79	nd
	RyGC	1.78 \pm 0.13	nd	9.50 \pm 1.04	nd
	Ri	1.62 \pm 0.68	nd	9.72 \pm 4.09	nd
	RiG	3.46 \pm 0.64	nd	10.71 \pm 1.58	nd
	RiC	3.44 \pm 0.85	nd	13.48 \pm 1.98	nd
	RiGC	3.00 \pm 1.63	nd	13.75 \pm 1.84	nd

^a Abbreviations for treatments are as Table 1.

^b nd: not detected.

^c Values are means \pm standard errors of three replications.

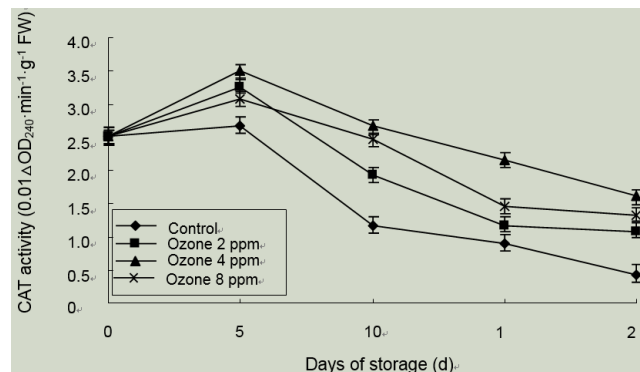
q. Figures

Figures should be practically self-explanatory. Readers should be able to understand them at a glance. Dimensional drawings and diagrams should include only the essential details and as little lettering as possible. They should present more of a picture than a working drawing. Unless necessary, line-drawing should be better drawn in black and white, and images be grayscale.

- Figures should be submitted as separate files. TIFF, EPS or CorelDraw figure formats are preferred. JPG and PDF are also acceptable.
- Figures should be drawn in the size of they virtually appear. Each figure should be able to fit on a single 210 mm x 277 mm page. We use two standard widths for figures: 1 column, 80 mm and 2 column, 150 mm (the full width of the page is 176 mm).
- Number all figures in the order of their citation in the text and cited as, e.g. Fig. 1. Include a title for each figure (a brief phrase, preferably no longer than 10 to 15 words). Use A, B, C... to give titles for subfigures if there are any.
- Helvetica or Arial font should be used for any text in figures.
- For color figures, the resolution should be 300 dpi at the desired print size.
- For black and white figures, the resolution should be 600 dpi at the desired print size.
- For line-art figures, the resolution should be 900 dpi at the desired print size.
- Maps: please use the authorized maps as the basis for map figure drawing. (Like maps published by China Map Press the like). Any maps drawn without the authorized basis have to be submitted with the certificate from the Surveying and Mapping management. All the maps should follow the publishing requirements released by the Government.
- Images: please provide the original pictures in '.tiff' format.

- Figure legends should appear, separate from the figures themselves, where the figures should be located within the paper.
- Unless needed, all the words within the figures should start with an uppercase character.

Please see the example below.



If you are using previously published figures:

- Request permission from the publishers or copyright holders to adapt figures; include citation/license/permission info in the captions. (Authors are responsible for obtaining all permissions, ideally before submitting the figures.)
- Redrawing a figure does not change copyright; if the original author would recognize the figure as his/hers, permission to adapt the figure must be obtained.

r. Formulae and equations

- Formulae should be typewritten whenever possible, or edited with “Equation Editor”.
- It is extremely important that all mathematical symbols and letters used are identified and listed and that the required style of appearance of such symbols is clearly indicated, e.g., bold face, italics, script, outline, etc.
- Subscripts and superscripts should be set off clearly.
- Identify in the margin any symbols that might be confused with similar symbols.
- The words Equation or Equations should appear in full at the beginning of sentences but be abbreviated to Eq. or Eqs. elsewhere.
- A nomenclature can be included (with the use of = signs) after the abstract if there is a significant number of symbols in the paper.
- Equations should be located separately from other lines if they are long or complicated.

s. Footnotes

Footnotes should only be used if absolutely essential. In most cases it will be possible to incorporate the information in normal text.

If used, they should be numbered in the text, indicated by superscript numbers, and kept as short as possible.

t. Units of measurement

Use SI units as much as possible, including in tables and figures—if you must use Imperial or U.S. units, place the SI equivalent in parentheses after the first use.

You are urged to consult IUPAC: Nomenclature of Organic Chemistry: <http://www.iupac.org/> for

further information.

u. Citations and references

In-text citations must be consistent with the reference list in either numbering or names and year. The references should be presented in a complete fashion, and should be the original publication. References should be cited in the text by the author's surname and year of publication. Grouped citations should be separated by semicolons and given in chronological order: e.g., (Peterson, 1984; Jackson and Whitehead, 1991; Shuman et al., 2001, 2004). Reference section should be arranged alphabetically according to the author's surname. Journal names should be spelled out in full.

Reference for journals

Zhu, Y.G., Johnson, T.A., Su, J.Q., Qiao, M., Guo, G.X., Stedtfeld, R.D., Hashsham, S.A., Tiedje, J.M., 2013. Diverse and abundant antibiotic resistance genes in Chinese swine farms. *Proceedings of The National Academy of Sciences of the United States of America* 110, 3435–3440

Reference for books

Gaydon, A.G., Wolfhard, H.G., 1960. *Flames*. 2nd ed. London: Chapman and Hall Ltd, 30–35

Norman, I.J., Redfern, S.J., eds. 1996. *Mental Health Care for Elderly People*. New York: Churchill Livingstone

Reference for a chapter in a book

Schlessinger, D., Schaechter, M., 1993. Bacterial toxins. In: Schaechter M, Medoff G, Eisenstein BI, eds. *Mechanisms of microbial disease*. 2nd ed. Baltimore: Williams and Wilkins, 162–175

Reference for symposium

Polito, V.S., 1983. Calmodulin and calmodulin inhibitors: Effect on pollen germination and tube growth. In: Mulvshy D L, Ottaviaro E, eds. *Pollen: Biology and Implication for Plant Breeding*. New York: Elsevier, 53–60

Cecil, T.E., Chern, S.S., 1989. Dupin submanifolds in Lie sphere geometry. In: Jiang B J, Peng C -K, Hou Z X, et al, eds. *Differential Geometry and Topology*. Lect Notes in Math, Vol 1369. Berlin: Springer-Verlag, 1–44

Reference for proceedings

Dmtriev, V., 2000. Complete tables of the second rank constitutive tensors for linear homogeneous bianisotropic media described by point magnetic groups of symmetry and some general properties of the media. In: *Proceedings of IEEE MTT-S IMOC'99*. Berlin: Springer, 435–439

The digital object identifier (DOI) may be used to cite and link to electronic documents. Consisting of a unique alpha-numeric character string which is assigned to a document by the publisher upon the initial electronic publication, DOI is an ideal medium for citing a document, particularly "Articles in press" when they have not yet received their full bibliographic information. The correct format for citing a DOI is shown as follows (example taken from a document in the *Communications in Nonlinear Science and Numerical Simulation*):

DOI:10.1016/j.cnsns.2007.05.034

v. Supplemental material

Supplementary information is peer-reviewed material directly relevant to the conclusion of an

article that cannot be included in the printed version owing to space or format constraints. It is posted on the journal's web site and linked to the article when the article is published and may consist of data files, graphics, movies or extensive tables. The printed article must be complete and self-explanatory without the supplementary information. Supplementary information enhances a reader's understanding of the paper but is not essential to that understanding. Supplementary information must be supplied to the editorial office in its final form for peer review. On acceptance the final version of the peer reviewed supplementary information should be submitted with the accepted paper. Supplementary information is not subedited, so authors should ensure that it is supplied ready for publication online. To ensure that the contents of the supplementary information files can be viewed by the editor(s), referees and readers, please also submit a "read-me" file containing brief instructions on how to use the file. The supplementary information may not be altered, nor new supplementary information added, after the paper has been accepted for publication.

w. Materials from third parties

We prefer to avoid reproducing material (for example, figures, tables, boxes and videos) directly from other publications unless it is exceptionally informative. If you are using the previously published material, please note that it is your responsibility to obtain permission to reproduce copyrighted material from the publishers or other copyright holders of the original material. It is ideal to obtain permission before submitting the material.

x. Notification

The corresponding author will be notified by the editors of the acceptance of article and invited to supply an electronic version of the accepted text, if this is not already available.

Post acceptance

Proofing

The proof will be sent to the corresponding author and should be returned within 72 hours after receipt. Authors should clarify any questions of the proof in a query file. No new materials are allowed to be inserted at the time of proofreading. Please note that authors are urged to check their proofs carefully before returning one all-inclusive file via e-mail or fax, since subsequent additional corrections will not be possible.

Author enquiries

For submission inquiries, tracking articles and any information please contact the Editorial Office of *Soil Ecology Letters* in the Institute of Urban Environment, CAS, or the Academic Journal Publishing Division, Higher Education Press. All correspondence for the journal should be sent to the following address. Please include the manuscript dispatch number in all correspondences.

Open choice

This journal offers authors a choice in publishing their research:

a. Subscription

- Articles are made available to subscribers as well as the mainland of China.
- No open access publication fee payable by authors.
- An author may self-archive an author-created version of his/her article on his/her own website and/or on his/her institutional repository. But the published journal article cannot be shared publicly.

b. Open access

- Articles are freely available to both subscribers and the wider public with permitted reuse.
- An open access publication fee is payable by authors or on their behalf, e.g. by their research funder or institution.

Regardless of how you choose to publish your article, the journal will apply the same peer review criteria and acceptance standards.

For more information about Open Choice, please see [Springer Open Choice](#)

Research data policy

The journal encourages authors, where possible and applicable, to deposit data that support the findings of their research in a public repository. Authors and editors who do not have a preferred repository should consult Springer Nature's list of repositories and research data policy.

[List of Repositories](#)

[Research Data Policy](#)

General repositories - for all types of research data - such as figshare and Dryad may also be used. Datasets that are assigned digital object identifiers (DOIs) by a data repository may be cited in the reference list. Data citations should include the minimum information recommended by DataCite: authors, title, publisher (repository name), identifier.

[DataCite](#)

Springer Nature provides a research data policy support service for authors and editors, which can be contacted at researchdata@springernature.com.

This service provides advice on research data policy compliance and on finding research data repositories. It is independent of journal, book and conference proceedings editorial offices and does not advise on specific manuscripts.

[Helpdesk](#)

Editorial Office of *Soil Ecology Letters*

Institute of Urban Environment, Chinese Academy of Sciences

1799 Jimei Road, Xiamen 361021, China

Tel: 0592-6190560

E-mail: SEL@iue.ac.cn

Academic Journal Publishing Division Higher Education Press

Floor 15, Fusheng Building, No. 4, Huixindongjie Str., Chaoyang Dist.

Beijing 100029, China

Tel: 86-10-58556534

E-mail: SEL@pub.hep.cn